



AutoMate BPA Server⁹

The IT and Business Process Automation Platform

The demand for software developers far exceeds the supply. For this reason as well as limited budgets and the need for greater employee efficiency, 11,000 organizations in more than 60 countries have deployed Network Automation's software package to automate a countless number of IT and business processes.

The technology found within AutoMate BPA Server 9 overshadows other more expensive products by automating highly complex business and IT processes across distributed networks without the need for writing code. The AutoMate BPA Server 9 solution includes workflow capabilities, drag-and-drop development, multi-machine functionality, extensive security provisions, and centralized management...all in one complete platform!

Clients report complete ROI within 3 months of implementation. Join the more than 11,000 active customers worldwide who have already discovered the power, flexibility, and cost savings of AutoMate BPA Server.

Customer Testimonials

"I have used dozens of automation tools over the years and I simply cannot stop singing the praises of Network Automation's BPA Server. The automation possibilities afforded by this tool are nearly unlimited. Its extraordinary capabilities and ease of use translates into an endless array of usages - limited only by ones imagination. Oh, and by the way, the NA support people are superb - both in response times and technical knowledge."

--Akiva Miller, Test Automation Lead at Thomas Reuters
New York, NY

"Automate BPA Server revolutionized the way we do automated solutions for our backend operations. We now run 60+ workflows handling a wide range of backend solutions, and it has now become a critical part of our daily operations. We have yet to see the limit on what we can achieve with this tool."

--Gilbert Camitioc, IT Project Manager at Citibank
Quezon City, Philippines

"AutoMate has saved our team hundreds of hours, literally. We continue to improve processes utilizing this software across the entire organization. Once we got started, we began to see many areas where AutoMate BPA could improve efficiency dramatically without bringing in outside consultants and without having to hire internal developers to maintain code. This is not just an IT tool."

--Ana Hanson, Application Operations Manager
at Mortgagebot
Indianapolis, IN

AUTOMATE BPA SERVER 9 BENEFITS:

- REDUCES APPLICATION DEVELOPMENT TIME BY MORE THAN 50% THROUGH THE USE OF ITS GUI-BASED TASK BUILDER AND WORKFLOW DESIGNER.
- LOWERS COSTS AND HASSLES ASSOCIATED WITH DEVELOPING AND MAINTAINING CODE, SCRIPTS, AND BATCH FILES.
- ELIMINATES TIME-CONSUMING, LABOR-INTENSIVE, REPETITIVE IT TASKS.
- ENABLES EMPLOYEES TO FOCUS ON STRATEGIC ACTIVITIES WHERE HUMAN INTERACTION AND THOUGHT ADD THE MOST VALUE.

Product Overview

AutoMate BPA Server 9 represents a significant leap forward in automation technology. Designed for the demanding complexities and deployment costs of the mid-market, but scalable and easy enough to use for small companies, and still robust enough for global corporations, AutoMate BPA Server is the automation platform suitable for any sized process automation need. It is a cogent investment that is sure to deliver business value and increase ROI to organizations across all vertical markets. As organizations seek out ways to reduce costs and improve efficiency, they consistently fall short due to the complexities of automating tasks using various scripts, batch files, macros, and other executables. Without a robust automation platform that provides an easy-to-use, end- to-end solution, the automation of IT and business processes becomes difficult to implement and costly to maintain.

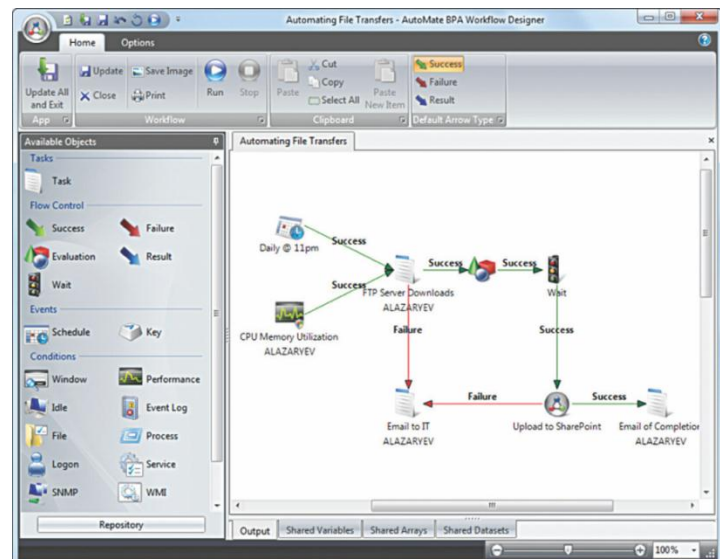
AutoMate BPA Server 9 raises the bar when it comes to functionality, ease of use, configurability, and cost as compared to other systems that are either very large, expensive, or both. It is the only product of its kind that offers the type of power typically found in large enterprise systems along with the simplicity found in applications with much less functionality. This marriage between power and simplicity combined with scalability creates the ideal automation platform.

Workflow Designer

The most common way companies attempt to automate business processes is by scheduling dozens of scripts and batch files to run on individual machines. These scripts essentially run randomly and have no intelligence as to what events might occur on other machines or over the network, thereby interfering with the scheduled processes. There is no concept of a coordinated business process running across multiple machines. The scripts require knowledge of syntax or code, and the results themselves are binary: success or failure.

AutoMate BPA Server 9 creates a platform for the development, management, and execution of coordinated business processes across multiple machines all without writing code. Instead of writing scripts and batch files, processes are detailed graphically as workflows using the Workflow Designer. A workflow is the framework that contains all the objects related to a particular automated process. Workflow objects include:

- **Tasks** – An individual process created via drag-and-drop using our comprehensive library of prebuilt actions.
- **Events/Conditions** – A state or occurrence that triggers an automated process to begin. Workflow Designer has a wide range of Events and Conditions including Schedule Event, Folder Watcher Condition, Performance Watcher, Service Watcher, Window Watcher, WMI Event, and many others.
- **Flow Controls** – Flow Controls allow for high-level conditional logic and decision-making within an automated process offering conditional branching based on the value of a variable/expression, or the success or failure of an object within a workflow.



Workflow Designer: Allows for drag-and-drop creation of workflows that can execute on multiple machines.

Creating a workflow is as easy as dragging and dropping the objects listed above in the desired configuration. Because of the intuitive and easy-to-use GUI interface, setting up a workflow within AutoMate BPA Server 9 takes a matter of minutes.

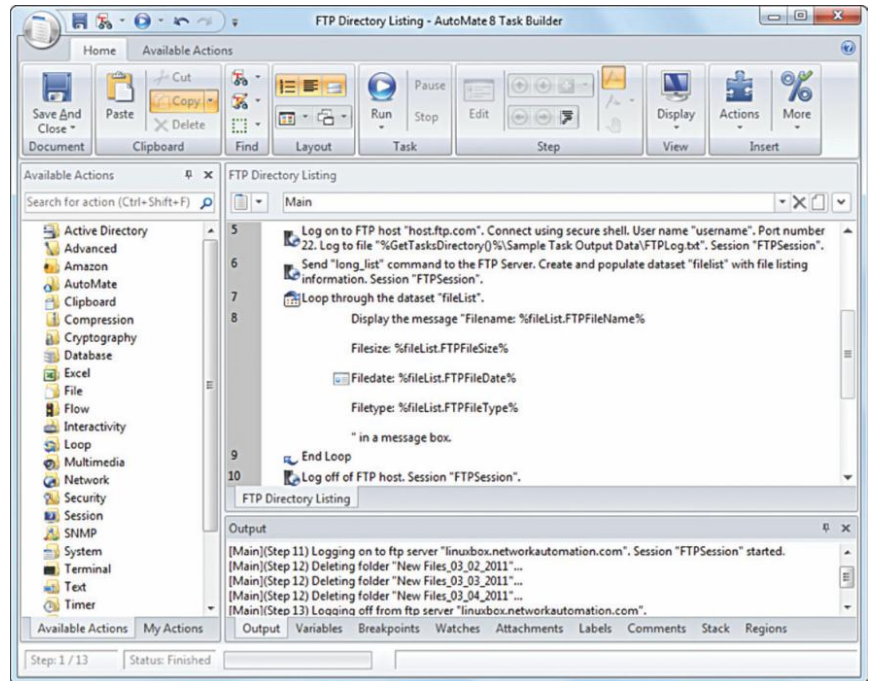
Task Builder

Relying solely on scripts and batch files for process automation is an inherently flawed methodology that leaves an organization vulnerable to many potential problems. Writing code is time intensive as it requires a development, debugging, and deployment phase. A script is intended to execute a simple task; however, basic scripts manifest into multiple script files, thousands of lines of codes, and the inevitable burden of maintaining the code. Also, writing code is costly to any organization. As additional projects are assigned to a developer, output decreases. As such, writing code is not a scalable solution.

The Task Builder within AutoMate BPA Server 9 eliminates the need for writing scripts and batch files altogether. With our comprehensive library of prebuilt Actions ranging from sending simple keystrokes to performing Terminal Emulation, the Task Builder enables users to quickly and easily drag-and-drop actions together, creating powerful automated processes without writing code.

Task Builder also provides the following important features:

- **Plain English Display** – All steps within a Task are displayed in Plain English text to eliminate any mysteries about what operation is being performed.
- **Error Identification** – Errors are clearly displayed and show the step in which the error occurred for easy debugging of Tasks.
- **Error Handling** –The Task Builder has the ability to automatically take corrective action and/or send notifications of the error.



Task Builder: The “no code” task development interface.

Constructing Tasks in AutoMate BPA Server 9 enables organizations to automate their business processes quickly, easily, reliably, and affordably, all without the need for writing code.

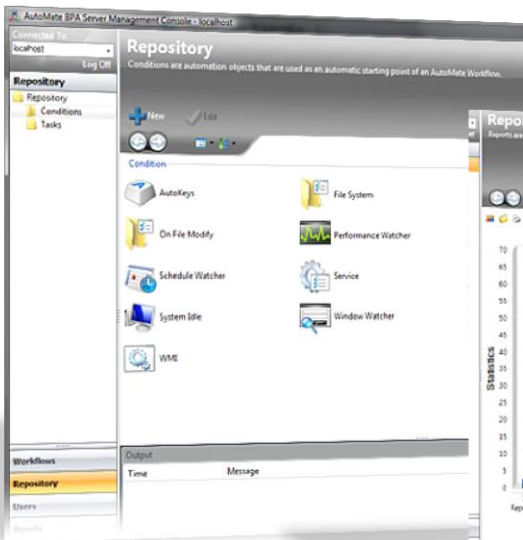
Server Management Console (SMC)

Management of automated processes at organizations without a complete BPA solution is fragmented at best. Often Windows Task Scheduler or another job scheduler is used to start scripts and batch files on individual machines. Anyone with access can schedule an executable to run on any available machine, exposing serious security concerns. With no concept of a Workflow, each task is run individually with limited reporting, making near impossible the management of the entire process. The lack of centralized management for automated processes contributes to compliance violations, lower productivity, and creates greater inefficiency in the workplace.

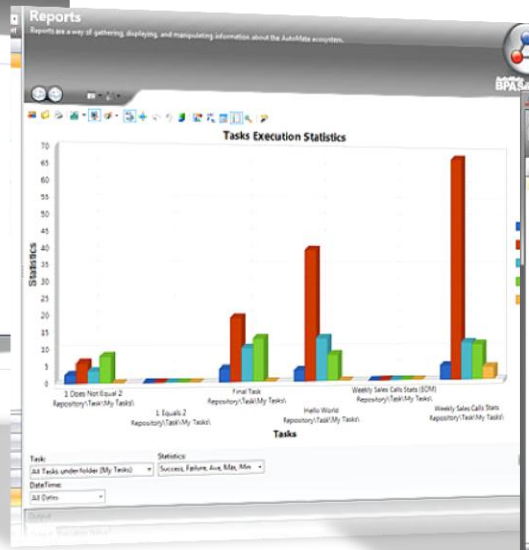
The Server Management Console (SMC) within AutoMate BPA Server 9 has been updated to solve this problem by providing centralized management and administration for all of the automated processes and Agents in a distributed network. The SMC offers several key features designed to address the problems described above. These features include the following:

- **User-Based Roles, Rights, and Views** – Security issues are handled by assigning users specific roles, rights, and views (Enterprise Only).
- **Reporting** – Workflow performance reporting is also centralized so administrators can easily monitor operations and quickly react to any exceptions. Workflow execution can be viewed in real time or historically providing summary graphs, charts, and tables to display the status and properties. This enables operators to see the entire system status on a high level.
- **Repository** – The SMC provides an Object Repository which allows administrators and developers to have access to all objects (workflows, tasks, and conditions) so they can be easily edited and incorporated into new workflows. Any change to an object in the Repository is applied globally to any work-flow in which the object is in use dramatically reducing the time spent on Task and Workflow maintenance.
- **Agent Management** – The Management Console provides tools for installing and uninstalling Agents responsible for workflow processing. Administrators can see all Agents connected to the Server as well as the maximum number of Agents the Server can support.
- **Web-Based SMC** – AutoMate BPA Server 9 provides a web-based interface to view and manage automation assets using any mobile or desktop device with browser access (Enterprise Only).

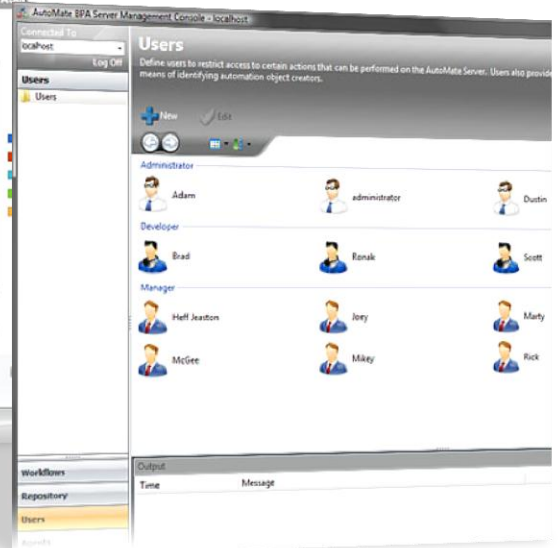
The features listed above give management full visibility into the application, allowing them to quickly and accurately monitor the efficiency, productivity, and state of compliance pertaining to their automated business processes.



Condition and task objects are saved in the repository for reuse across multiple workflows.



Task execution graph—one of the many audit/report views in the Management Console.



Centralized, role based, user management view.

Editions Overview

AutoMate BPA Server 9 offers two editions: Standard and Enterprise. The Enterprise Edition offers all the features found in the Standard Edition along with the following:

- **Unlimited Number of Agents** – AutoMate BPA Server 9 allows for the centralized management of tasks and workflows over your network. Purchasing the Enterprise Edition allows an unlimited number of Agent connections to the Server. Customers requiring execution on more than 10 machines will require the Enterprise Edition. The number of Agents that can connect to your installation of AutoMate BPA Server is governed by the number of Client Access Licenses (CALs) registered on the Server. Enterprise Edition enables customers to purchase and register an unlimited number of CALs, while Standard Edition limits the number of connected Agents to a maximum of 10 machines. Note: CALs sold separately.
- **User Accounts** – For any organization with multiple people involved in the automation lifecycle, the benefits of user accounts are substantial. With the Enterprise Edition, Administrators can create an account for each user and assign a role to restrict what changes the user can make to the system. Obviously, this greatly enhances security: if a user does not have an account, that user cannot gain access to the system.
- **User Roles and Object Promotion** – User accounts and roles also enable tight control of the progression of automation projects throughout the automation lifecycle, from initial development into a testing environment which results in full scale production. Administrators and Managers can assign a completion state to a workflow or a task. Options for the completion state include In Development, Testing, Production, and Archive. Object promotion prevents tasks and workflows from being put into production before they have been thoroughly tested. This will ensure quality and compliance in your production environment.
- **Workflow and Task Auditing** – User accounts also improve system transparency and communication between team members. Enterprise Edition enables tracking of activities in AutoMate BPA Server 9, such as user connection, workflow/task creation, and deletion. This allows team members to access information quickly to resolve issues or unexpected changes. Monitoring activities helps enforce internal compliance, and otherwise prevents tampering of mission-critical tasks and workflows. Monitoring team members involved in the development and editing of tasks and workflows helps Administrators and Managers keep track of project status and progress. Projects are better managed when responsibilities are divided based on user roles.
- **Cross Platform Automation** – Allows for direct execution across multi-platforms. The Process Agent is written in Java, which makes it compatible to the most common desktop operating systems, including Linux, Unix, Mac OS X, Solaris, and Microsoft Windows.
- **Web-based Server Management Console**—Provides a web-based version (application/install free) of the Server Management Console. (This is feature optional, requires IIS with .NET 4.)

These features are designed to offer greater security, organization, reporting, and deployment options to the businesses that require them. While not every company will need the robustness of the Enterprise Edition, it will prove invaluable to those with larger or more demanding implementations of AutoMate BPA Server 9.

Licensing Model

Network Automation products are licensed on a per machine basis. Each machine used for management, development, or execution of an automated business processes using AutoMate BPA Server will require a license. Below is a brief description of each licensed component of AutoMate BPA Server 9.

- **Server** – The Server provides all of the management and reporting capabilities for AutoMate BPA Server 9, including the Server Management Console.
- **Client Access License** – Each Client Access License enables the use of an Agent for execution of tasks and workflows on one machine.
- **Development Tools** – The Development Tools are used to create the actual automated processes and include the Workflow Designer and Task Builder.

The purchase of AutoMate BPA Server 9 includes one Server for management capabilities, one set of Development Tools for the development of Tasks and Workflows, and one Client Access License (CAL) for execution of tasks workflows. Additional Development Tools and Client Access Licenses are sold separately.



LOUPREY
INTERNATIONAL



(55) 5543 6515
marketing@louprey.com
www.louprey.com
Kansas #7 Piso 2, Col. Nápoles, C.P. 03810,
Benito Juárez, Ciudad de Mexico